

# Product data sheet

## Automation technology - Data transmission

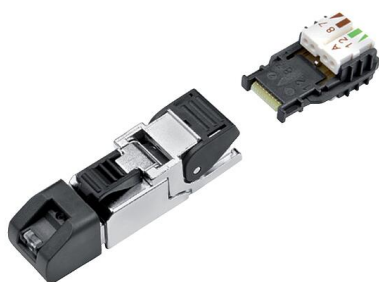


Product description **RJ45 connector, Contacts: 4, 5.0-9.0 mm, shieldable, Piercing technology, IP20**

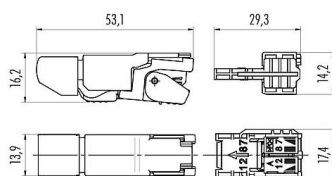
Area **RJ45**

Part no. **99 9647 810 04**

### Illustration



### Scale drawing



### Technical data

#### General features

Part no.	<b>99 9647 810 04</b>
Connector design	connector
Version	Connector pin straight
Connector locking system	lock
Termination	Piercing technology
Degree of protection	IP20
Cross-sectional area	AWG 24-22/1, AWG 27-22/7
Cable outlet	5.0-9.0 mm
Temperature range from/to	-40 °C / 85 °C
Mechanical operation	> 750 Mating cycles
Connection standard	TIA 568 Profinet
Weight (g)	25.34
Customs tariff number	85369010
Country of Origin	DE

#### Electrical parameters

Rated voltage	50 V DC
Rated current	1.3 A
Pollution degree	2
Transmission rate	CAT 6A
Overvoltage category	III
Insulating material group	IIIa
EMC compliance	shieldable
Shield connection	Shield clamping

#### Material

Housing material	Zinc die-cast nickel-plated
------------------	-----------------------------

# Product data sheet

## Automation technology - Data transmission



Product description	<b>RJ45 connector, Contacts: 4, 5.0-9.0 mm, shieldable, Piercing technology, IP20</b>
Area	<b>RJ45</b>
Part no.	<b>99 9647 810 04</b>

Contact body material	PC
Contact material	Spring steel
Contact plating	Au (gold)
REACH SVHC	None (No pollutants)
SCIP number	SCIP-number not available

### Classifications

eCl@ss 11.1	27-44-01-02
ETIM 9.0	EC002635

Product description	<b>RJ45 connector, Contacts: 4, 5.0-9.0 mm, shieldable, Piercing technology, IP20</b>
Area	<b>RJ45</b>
Part no.	<b>99 9647 810 04</b>

## Security notices

The connector must not be plugged or unplugged under load. Non-observance and improper use can result in personal injury.

The connectors have been developed for applications in plant engineering, control and electrical equipment construction. The user is responsible for checking whether the connectors can also be used in other areas of application.

To protect against unintentional opening of the connector, the thread between the housing and the connector head must be secured with a suitable cyanoacrylate adhesive when used in circuits with voltages dangerous to the touch. This does not apply to connectors used in SELV and PELV circuits according to IEC 61140 (EN 61140, VDE 0140-1).

Connectors which are used in circuits with voltages dangerous to the touch may only be installed and used by, or under the supervision of, persons with electrical engineering training, taking into account the applicable regulations and standards.

Plug connectors with enclosure protection IP67 and IP68 are not suitable for use under water. When used outdoors, the plug connectors must be protected separately against corrosion. For further information on the IP protection classes, please refer to the "Technical Information" download centre.

To lock the cable connector with the device connector, the threaded ring is tightened "hand-tight" (approx. 60 cNm).