

Product data sheet

Miniature connectors

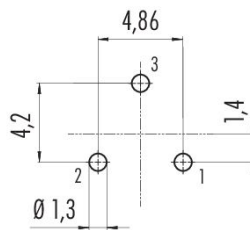


Product description	Snap-In Female panel mount connector, Contacts: 3, unshielded, THT, IP67, VDE
Area	Snap-in IP67
Part no.	99 9108 090 03

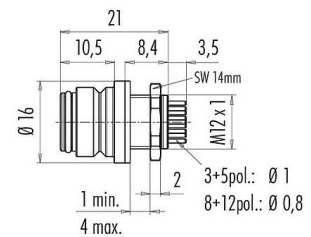
Illustration



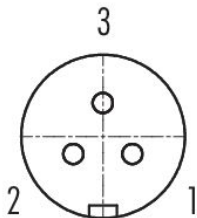
Conductor layout



Scale drawing



Contact arrangement (Plug-in side)



You can find the component part drawing and assembly instructions on the next page.

Technical data

General features

Part no.	99 9108 090 03
Connector design	Female panel mount connector
Version	Connector socket straight
Connector locking system	snap-in
Termination	THT
Degree of protection	IP67
Cross-sectional area	max. 0.75 mm ² / AWG 18



Product data sheet

Miniature connectors



Product description	Snap-In Female panel mount connector, Contacts: 3, unshielded, THT, IP67, VDE
Area	Snap-in IP67
Part no.	99 9108 090 03

Temperature range from/to	-25 °C / 85 °C
Mechanical operation	> 500 Mating cycles
Weight (g)	5.50
Customs tariff number	85369010
Country of Origin	DE

Electrical parameters

Rated voltage	250 V
Rated impulse voltage	2500 V
Rated current	7.0 A
Insulation resistance	$\geq 10^{10} \Omega$
Pollution degree	2
Overvoltage category	II
Insulating material group	II
EMC compliance	unshielded

Material

Housing material	PA
Contact body material	PA (UL94 V-0) black
Contact material	CuSn (bronze)
Contact plating	Au (gold)
REACH SVHC	CAS 7439-92-1 (Lead)
SCIP number	bc6faa58-d78d-4594-9dc5-99b0e7153f6a

Authorization/approvals

Approvals	VDE
-----------	-----

Classifications

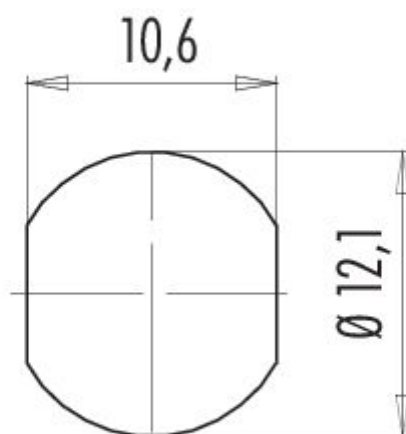
eCl@ss 11.1	27-44-01-02
ETIM 9.0	EC002635



Product data sheet
Miniature connectors

Product description	Snap-In Female panel mount connector, Contacts: 3, unshielded, THT, IP67, VDE
Area	Snap-in IP67
Part no.	99 9108 090 03

Assembly instructions / Panel cut-out

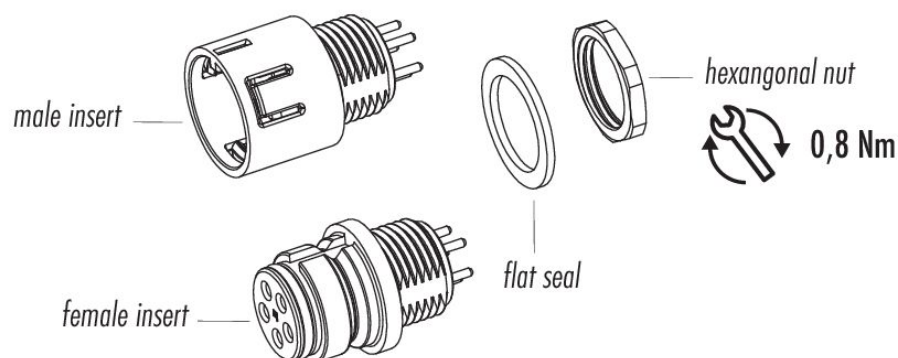


Product data sheet

Miniature connectors

Product description	Snap-In Female panel mount connector, Contacts: 3, unshielded, THT, IP67, VDE
Area	Snap-in IP67
Part no.	99 9108 090 03

Component part drawing



Product description	Snap-In Female panel mount connector, Contacts: 3, unshielded, THT, IP67, VDE
Area	Snap-in IP67
Part no.	99 9108 090 03

Security notices

The connector must not be plugged or unplugged under load. Non-observance and improper use can result in personal injury.

The connectors have been developed for applications in plant engineering, control and electrical equipment construction. The user is responsible for checking whether the connectors can also be used in other areas of application.

To protect against unintentional opening of the connector, the thread between the housing and the connector head must be secured with a suitable cyanoacrylate adhesive when used in circuits with voltages dangerous to the touch. This does not apply to connectors used in SELV and PELV circuits according to IEC 61140 (EN 61140, VDE 0140-1).

Connectors which are used in circuits with voltages dangerous to the touch may only be installed and used by, or under the supervision of, persons with electrical engineering training, taking into account the applicable regulations and standards.

Plug connectors with enclosure protection IP67 and IP68 are not suitable for use under water. When used outdoors, the plug connectors must be protected separately against corrosion. For further information on the IP protection classes, please refer to the "Technical Information" download centre.