

# Product data sheet

## Subminiature connectors

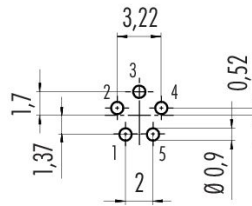


Product description	M9 Female angled panel mount connector, Contacts: 5, unshielded, THT, IP40
Area	M9 IP40
Part no.	09 0098 72 05

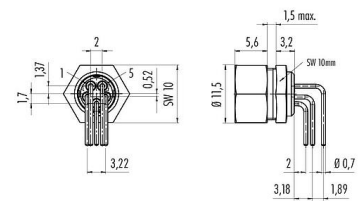
### Illustration



### Conductor layout

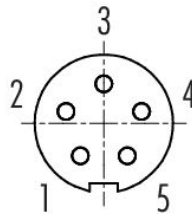
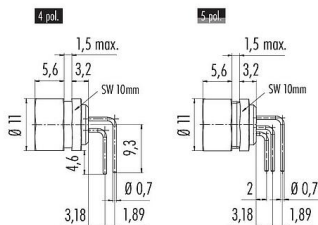


### Flexplatte



### Scale drawing

### Contact arrangement (Plug-in side)



You can find the assembly instructions on the next page.

### Technical data

#### General features

Part no.	09 0098 72 05
Connector design	Female angled panel mount connector
Version	Connector socket angled
Connector locking system	screw
Termination	THT
Degree of protection	IP40
Temperature range from/to	-40 °C / 85 °C

# Product data sheet

## Subminiature connectors



Product description	<b>M9 Female angled panel mount connector, Contacts: 5, unshielded, THT, IP40</b>
Area	<b>M9 IP40</b>
Part no.	<b>09 0098 72 05</b>

Mechanical operation	> 500 Mating cycles
Weight (g)	3.19
Customs tariff number	85369010
Country of Origin	DE

### Electrical parameters

Rated voltage	125 V
Rated impulse voltage	1500 V
Rated current	3,0 A
Insulation resistance	$\geq 10^{10} \Omega$
Pollution degree	1
Overvoltage category	II
Insulating material group	III
EMC compliance	unshielded

### Material

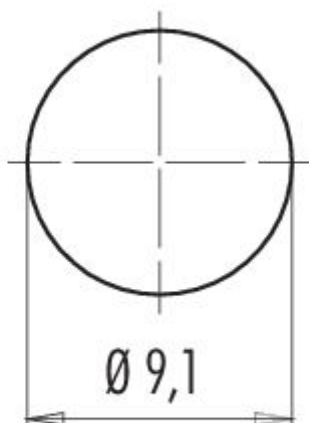
Contact body material	PA (UL94 V-0)
Contact material	CuSn (bronze)
Contact plating	Au (gold)
REACH SVHC	CAS 7439-92-1 (Lead)
SCIP number	2c78ce18-a4b1-4e1e-96cd-31340a9b523e

### Classifications

eCl@ss 11.1	27-44-01-09
ETIM 9.0	EC003569

Product description	<b>M9 Female angled panel mount connector, Contacts: 5, unshielded, THT, IP40</b>
Area	<b>M9 IP40</b>
Part no.	<b>09 0098 72 05</b>

**Assembly instructions / Panel cut-out**



Product description	<b>M9 Female angled panel mount connector, Contacts: 5, unshielded, THT, IP40</b>
Area	<b>M9 IP40</b>
Part no.	<b>09 0098 72 05</b>

### **Security notices**

The connector must not be plugged or unplugged under load. Non-observance and improper use can result in personal injury.

The connectors have been developed for applications in plant engineering, control and electrical equipment construction. The user is responsible for checking whether the connectors can also be used in other areas of application.